



PDF SHARE FORMS

Online, Offline, OnDemand

PDF forms and SharePoint are better together

Template migration

Contents

Template (PDF Share Forms Enterprise for SharePoint 2010).....	2
Template migration.....	5



This guide describes how to perform dynamic (XFA) and static (Acro) template migration, when forms have data sources and client side scripts, from PDF Share Forms Enterprise 2010 to PDF Share Forms Enterprise 2013.

Template (PDF Share Forms Enterprise for SharePoint 2010)

Step 1. This “Employees” list is used for demonstration

Name	Surname
John	Smith
Kate	Argent
Kim	Tomphson
James	Torn
Natalie	Arin
Alex	Ront
Alan	Green
Till	Abel
Elen	Adler
Clark	Lorens
Adams	Martin
Lisa	Edwards

+ Add new item

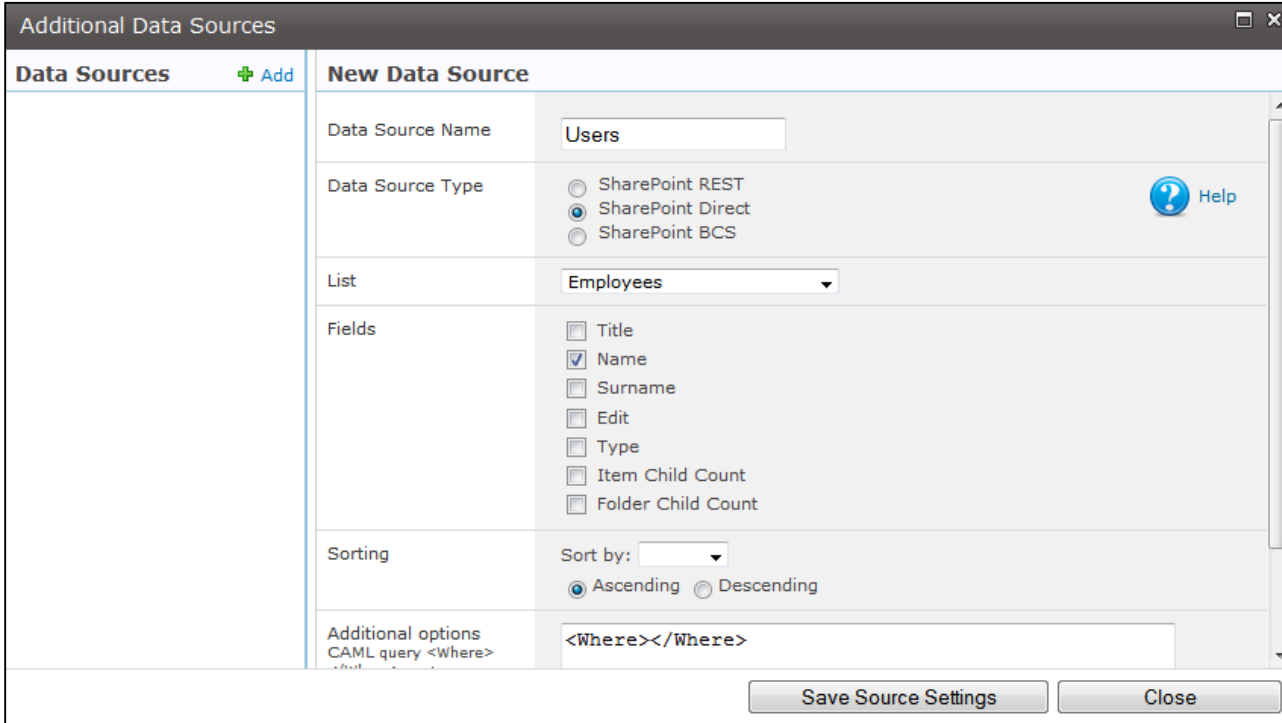
Step 2. Template

The screenshot shows a PDF form template interface. On the left is a 'Hierarchy' pane with a tree view containing 'Page 1', 'SubmitButton1', 'Customers', and 'CreatedBy'. On the right, the form content includes the PDF Share Forms logo and tagline. Below this, there is a 'Save' button, a 'Created By' text input field, and a 'Customers' dropdown menu.

This template has following controls:

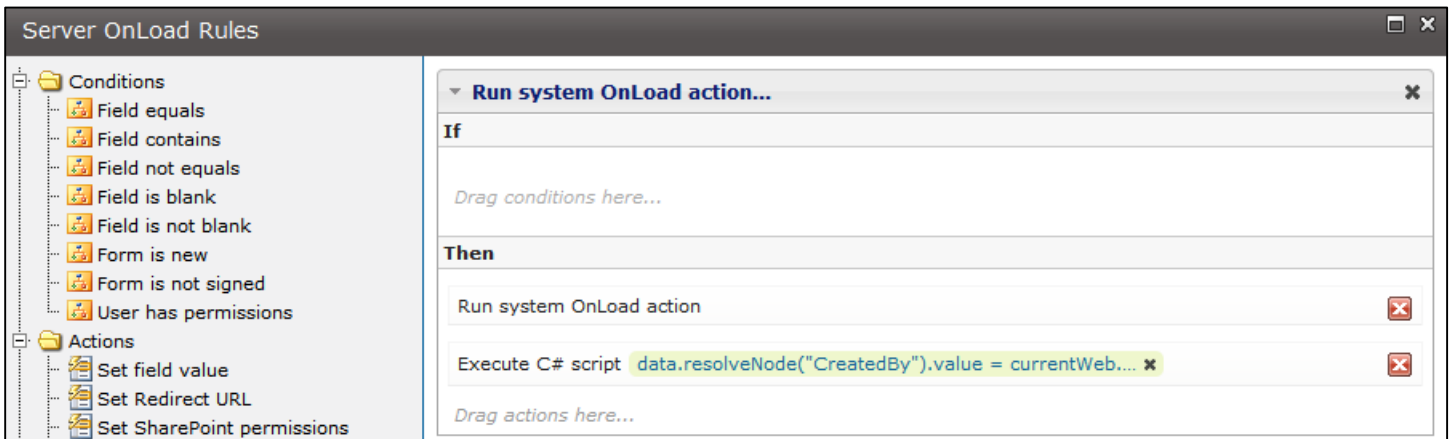
- ✔ SubmitButto1 – as submit button;
- ✔ CreatedBy – text field to store current user name;
- ✔ Customers – dropdown that is going to be filled with values from data source.

Step 3. Create new data source. In this example from specific SharePoint list



NOTE: in order to make this data source working in SharePoint 2013 site collection, there must be similar list

Step 4. Add action to **Form Load** rule. Navigate to **PDF Form Tools** → **Developer** → **Form Load** add **Execute C# script** action



Script:

```
data.resolveNode("CreatedBy").value = currentWeb.CurrentUser.Name;
```

This code populates **“Created By”** field with current user name.



Step 5. Add On Form Ready Script. Navigate to **PDF Form Tools → Developer → On Form Ready Script**

Script:

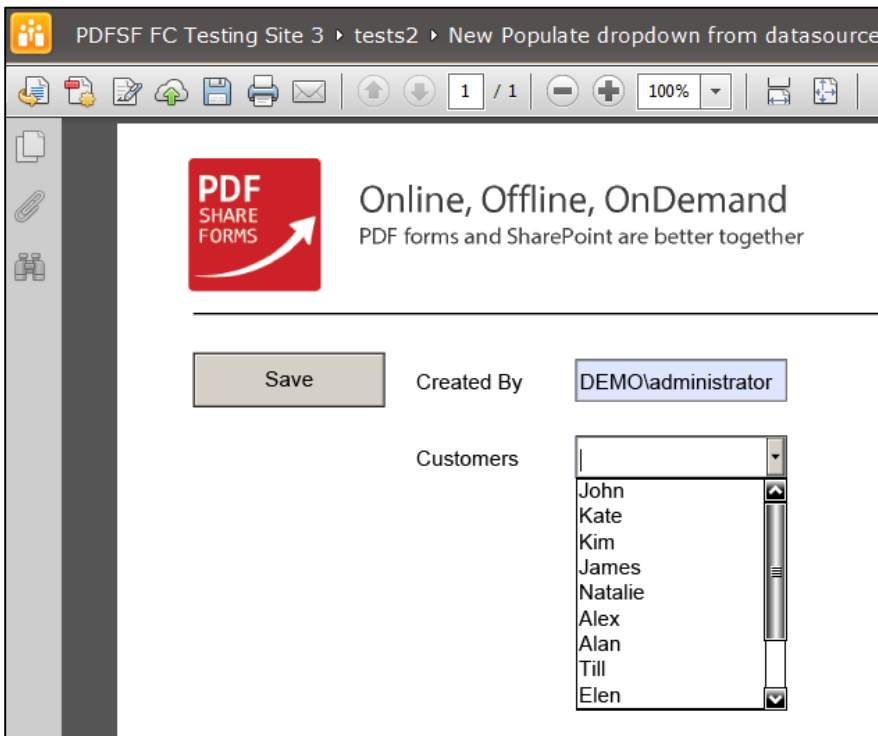
```
var dropdown = xfa.resolveNode('$form.Root.Default..Customers');  
dataList = PdfForms.DataSources["Users"]; //data source name  
for(var i = 0; i < dataList.length; i++){  
    dropdown.addItem(dataList[i]["Name"],dataList[i]["Name"]); //data source value  
}
```

This script populates dropdown with values from the **User** data source.

NOTE: In Static (Acro) form script is:

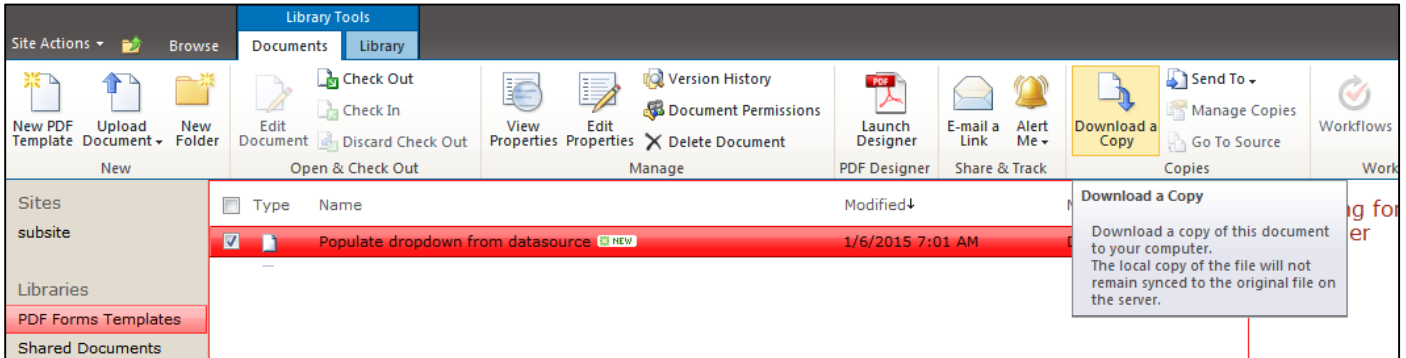
```
var val = this.getField("Customers").value;  
var dropdown = this.getField("Customers");  
dataList = DataSources['Users'];  
for(var i = 0; i < dataList.length; i++){  
    dropdown.insertItemAt(dataList[i]["Name"],dataList[i]["Name"], i);  
}  
this.getField("Customers").value = val;
```

Step 6. Runtime

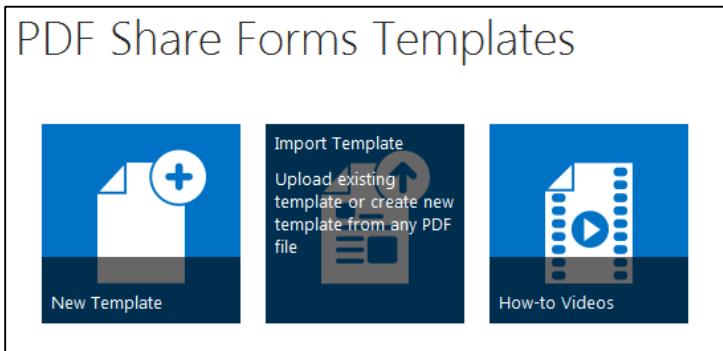


Template migration

Step 1. Download template



Step 2. Navigate to **SharePoint 2013** site → **PDF Share Forms Templates** → **Import Template** to import this template



Step 3. Open this template in designer

Step 4. Make changes to **Form Load** rule. Navigate to **Developer** → **Form Load** → **Execute C# script** action

PDF Share Forms Enterprise for SharePoint 2010
`data.resolveNode("CreatedBy").value = currentWeb.CurrentUser.Name;`

PDF Share Forms Enterprise for SharePoint 2013
`data.resolveNode("CreatedBy").Value = currentWeb.CurrentUser.Name;`

Step 5. Make changes in **On Form Ready Script**. Navigate to **Developer** → **Global Events** → **On Form Ready Script** and change this line (dynamic form)

PDF Share Forms Enterprise for SharePoint 2010
`dataList = PdfForms.DataSources["Users"];`

PDF Share Forms Enterprise for SharePoint 2013
`dataList = PdfForms.DataSources.Users;`

In Static (Acro) form:

PDF Share Forms Enterprise for SharePoint 2010
`dataList = DataSources["Users"];`

PDF Share Forms Enterprise for SharePoint 2013
`dataList = DataSources.Users;`

NOTE: Make sure that list, which data source is using to get values, is created in this SharePoint 2013 site collection.



Online, Offline, OnDemand

PDF forms and SharePoint are better together

Step 6. Runtime

The screenshot shows a web browser window with the address bar displaying "Home > Guides > New 'Populate dropdown from datasource' Document". The browser toolbar includes icons for home, back, forward, print, and zoom, with the zoom level set to 108%. The page content features the PDF SHARE FORMS logo and the text "Online, Offline, OnDemand" and "PDF forms and SharePoint are better together". Below this, there is a "Save" button, a "Created By" field with the value "System Account", and a "Customers" dropdown menu. The dropdown menu is open, showing a list of names: John, Kate, Kim, James, Natalie, Alex, Alan, Till, and Elen.