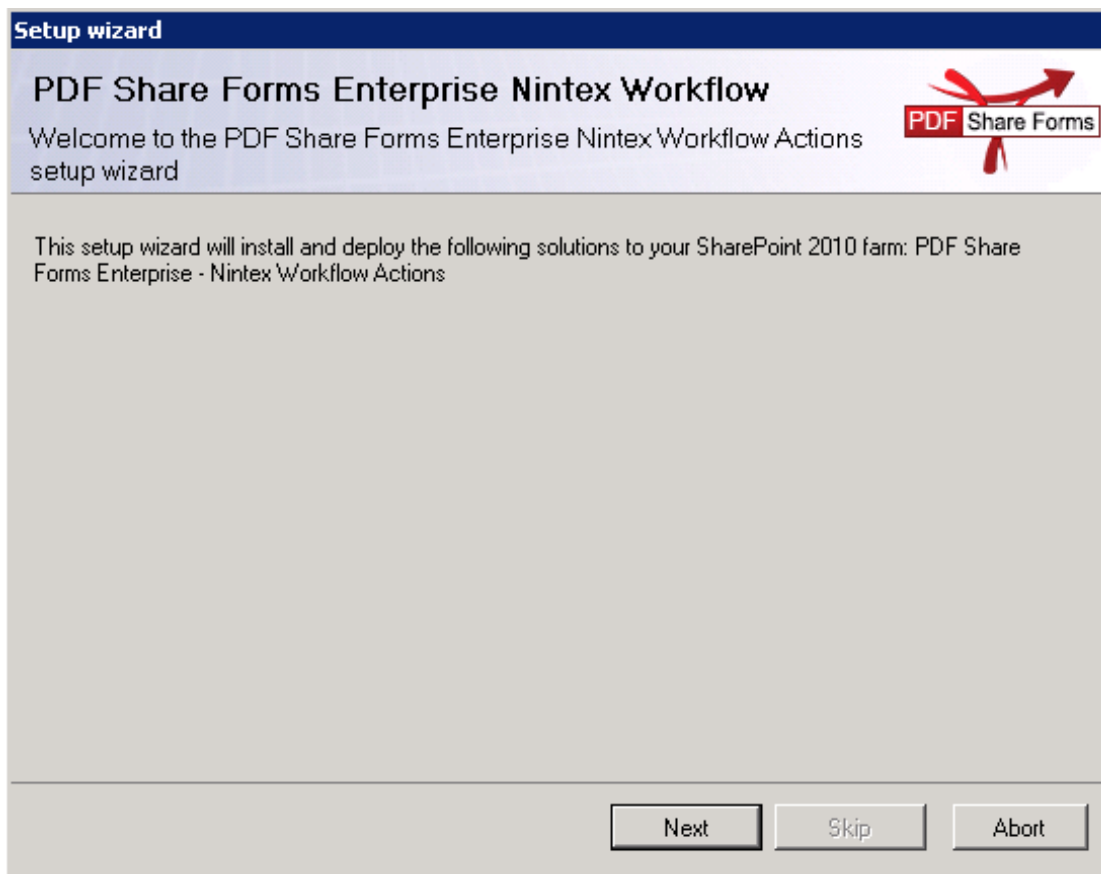


Integrating Nintex Workflows with PDF Share Forms Enterprise

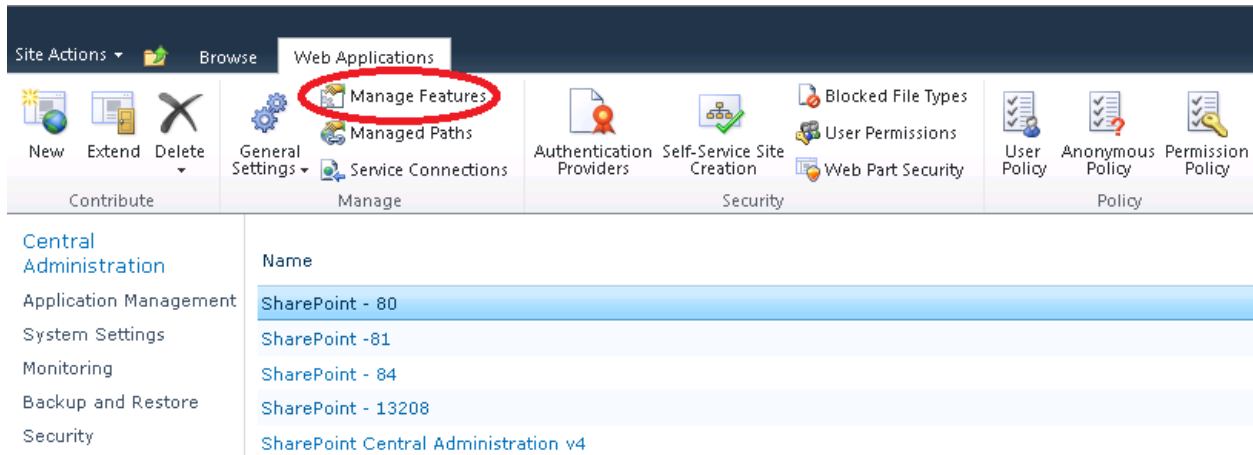
Installing Actions for Nintex

Step 1. Run Setup.exe from 05-Nintex.Actions folder:

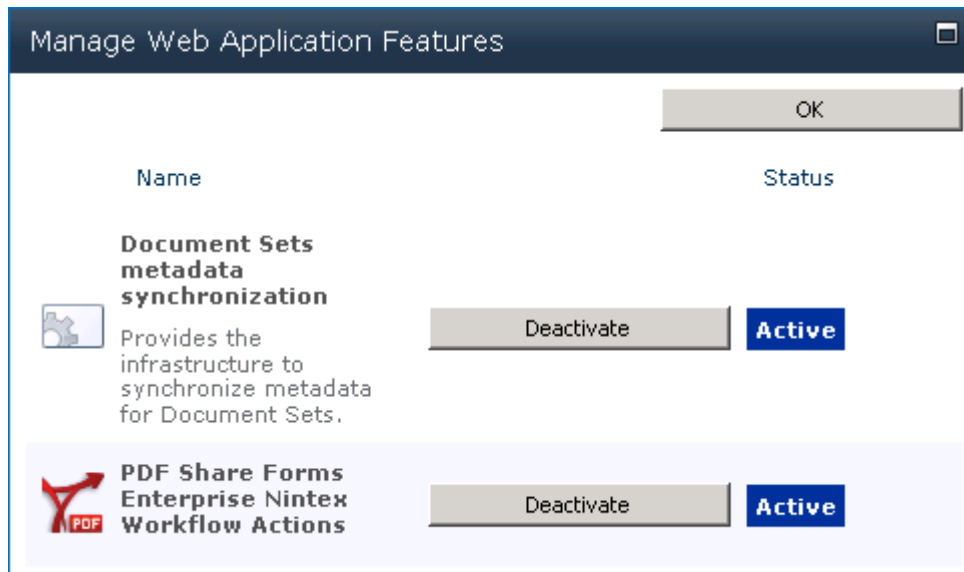


Step 2. Go through all Setup Wizard steps and select corresponding sites to activate the feature.

Step 3 (optional). Enable *PDF Share Forms Enterprise Nintex Workflow Actions* application feature.
Central Administration > Application Management > Manage Web Applications.
 Select your web application and click Manage Features:

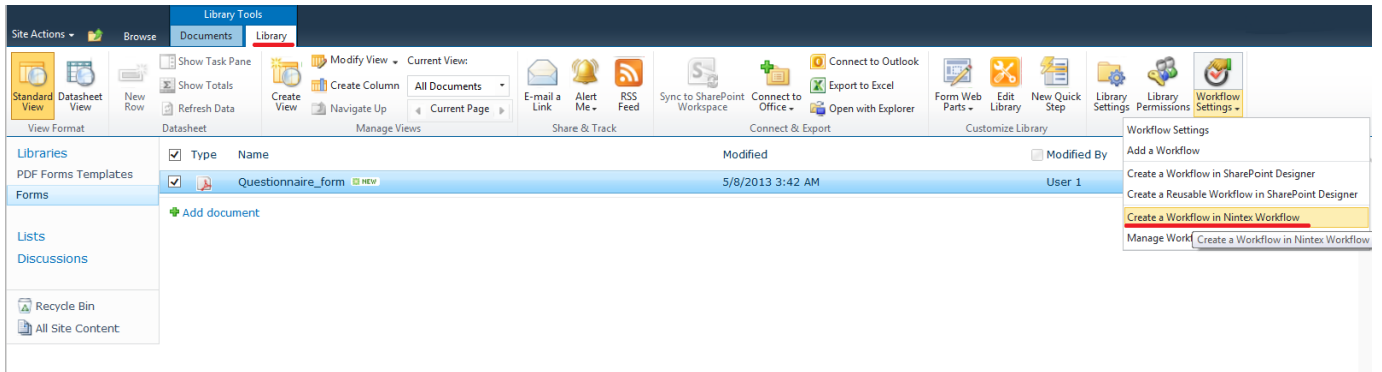


Then, activate PDF Share Forms Enterprise Nintex Workflow Actions:

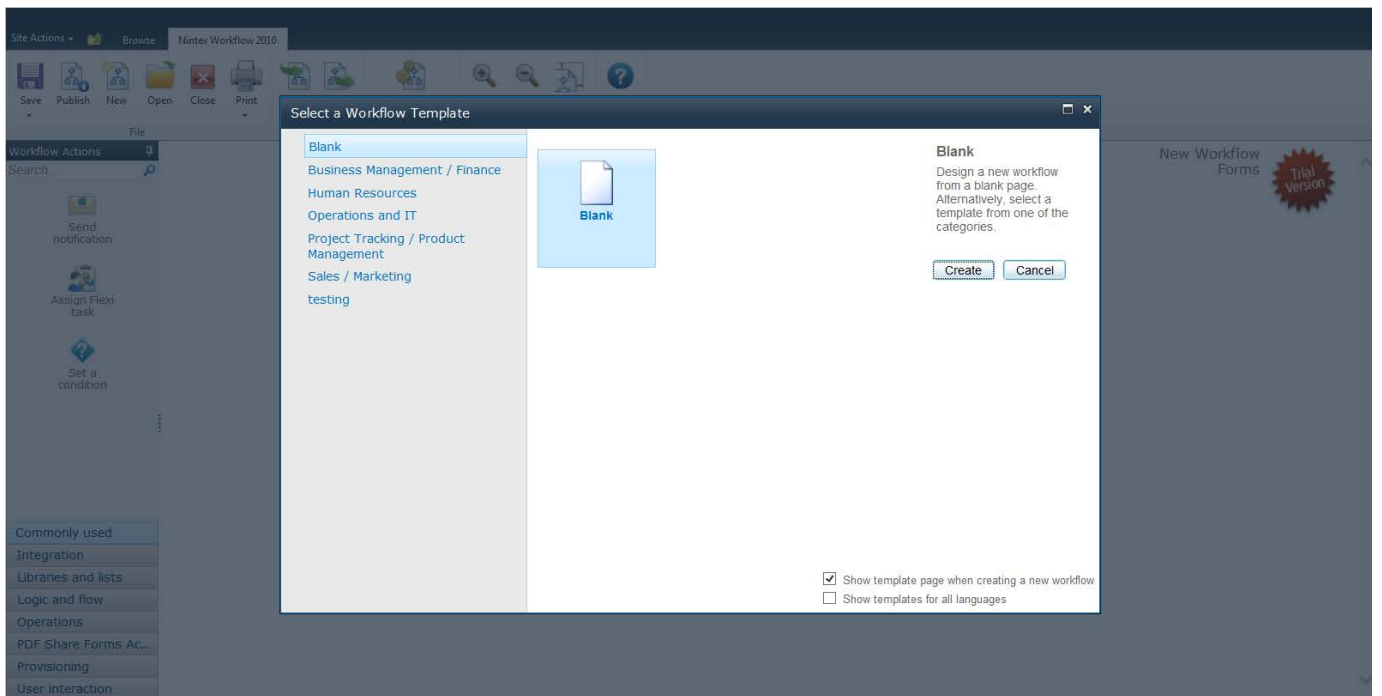


Creating workflow with PDF Share Forms Workflow Actions

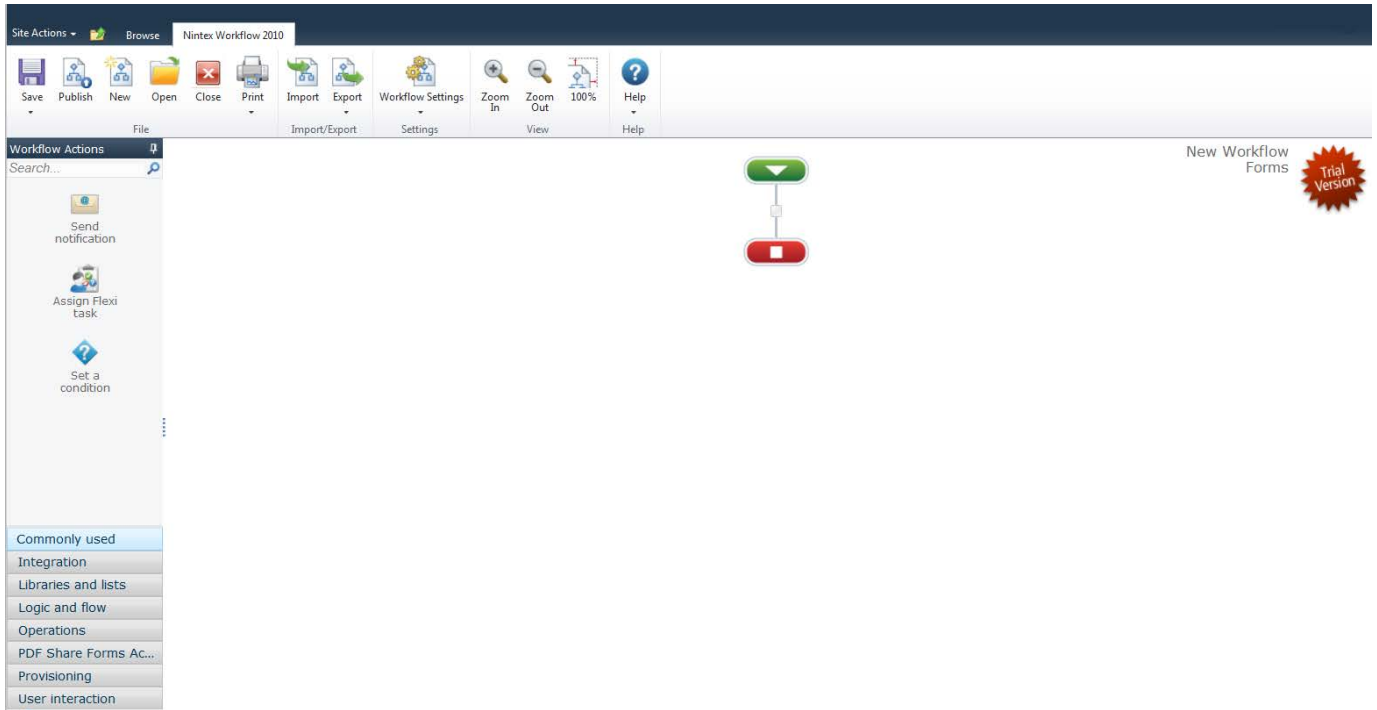
Step 1. Choose the document you have uploaded and left-click on **Library** at the top. Navigate to **Workflow Settings** and select **Create a Workflow in Nintex Workflow** section.



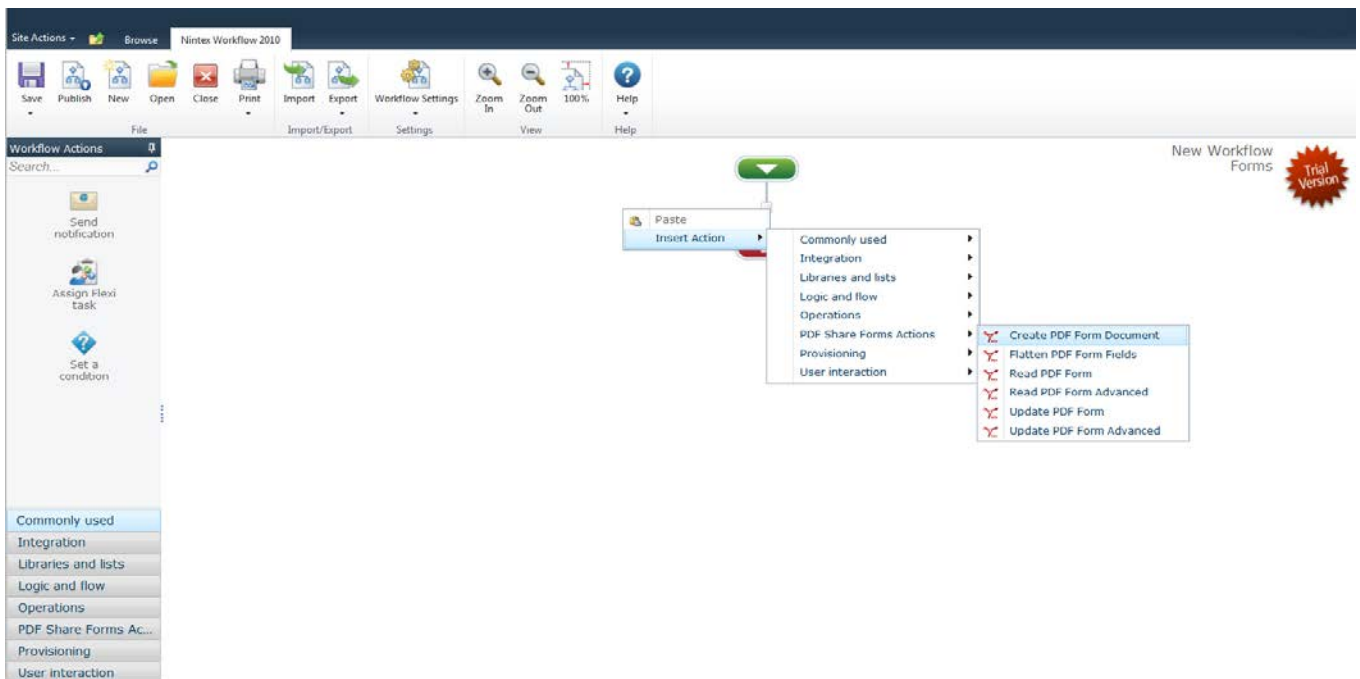
Step 2. The page will open a new window in which you will be required to select a Workflow Template. Press **Create** button.



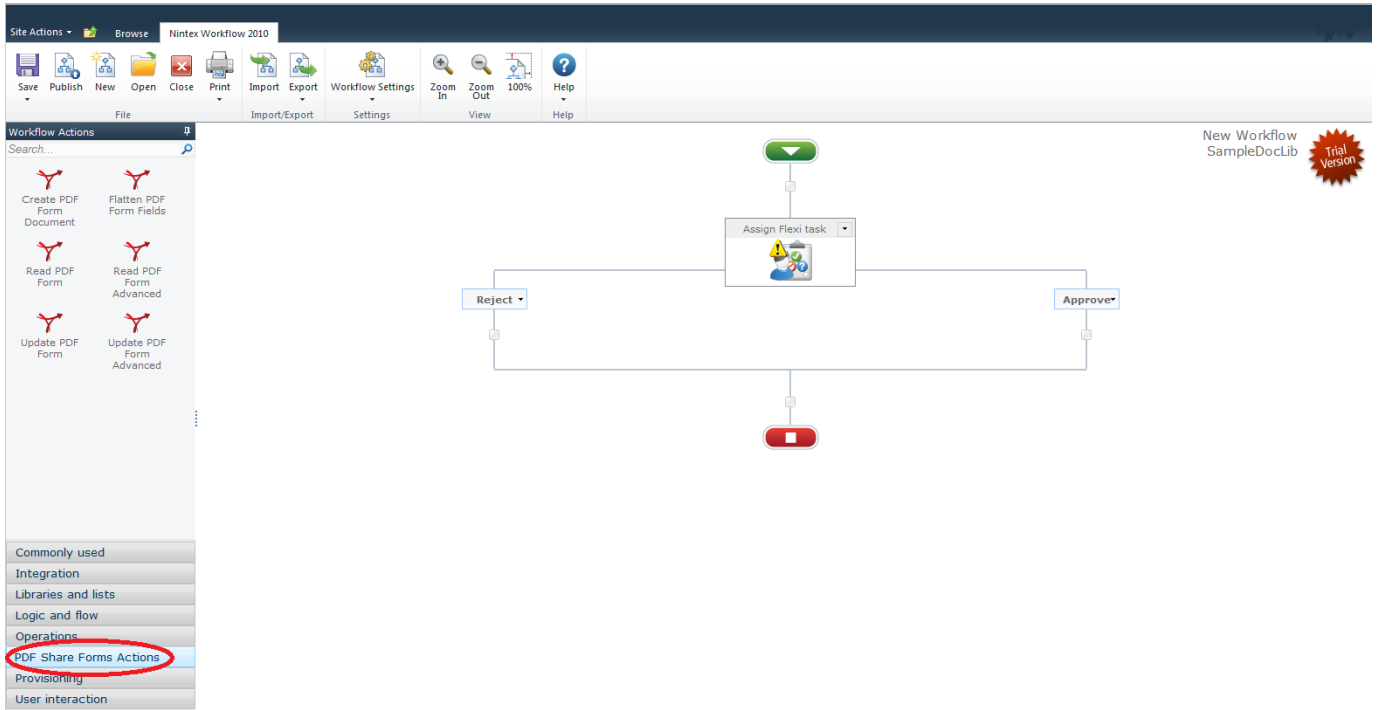
You will be redirected to a page that looks similar to this (your page will have your user name and settings):



Step 3. To insert an action you should select from the drop-down list and choose the form you want to appear.



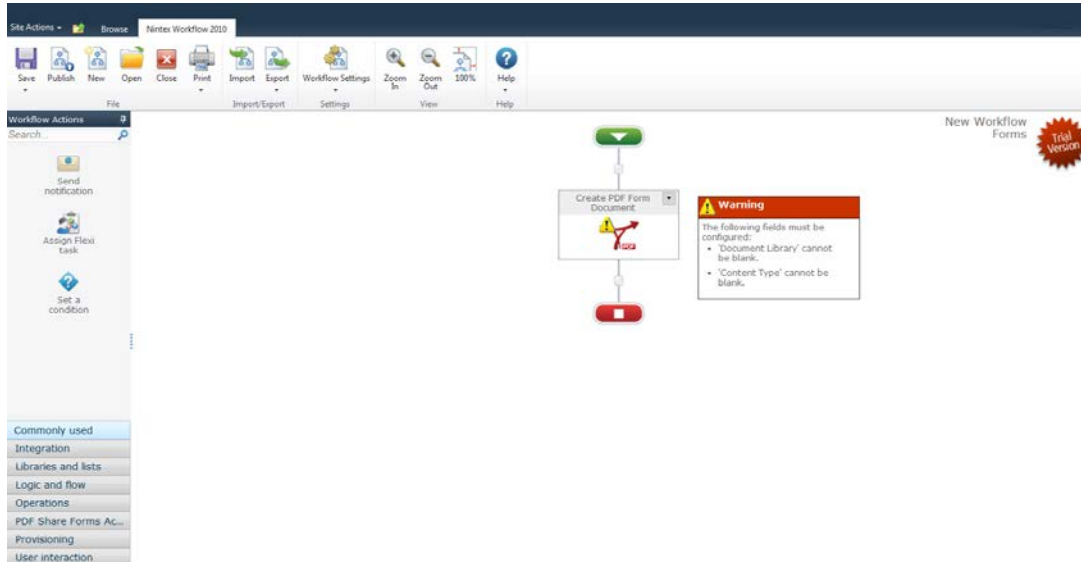
Step 3.1. It is also possible to choose an action from the menu on the left:



PDF Share Forms Workflow Actions

Create PDF Form Document	Creates new PDF document in specific library based on content type.
Flatten PDF Form Fields	Removes fields in document and replaces them with static text from fields.
Read PDF Form	Reads values from PDF document data field.
Read PDF Form Advanced	Reads whole PDF document and returns it as XML string.
Update PDF Form	Updates specific fields with specific values.
Update PDF Form Advanced	Updates whole PDF document with XML string.

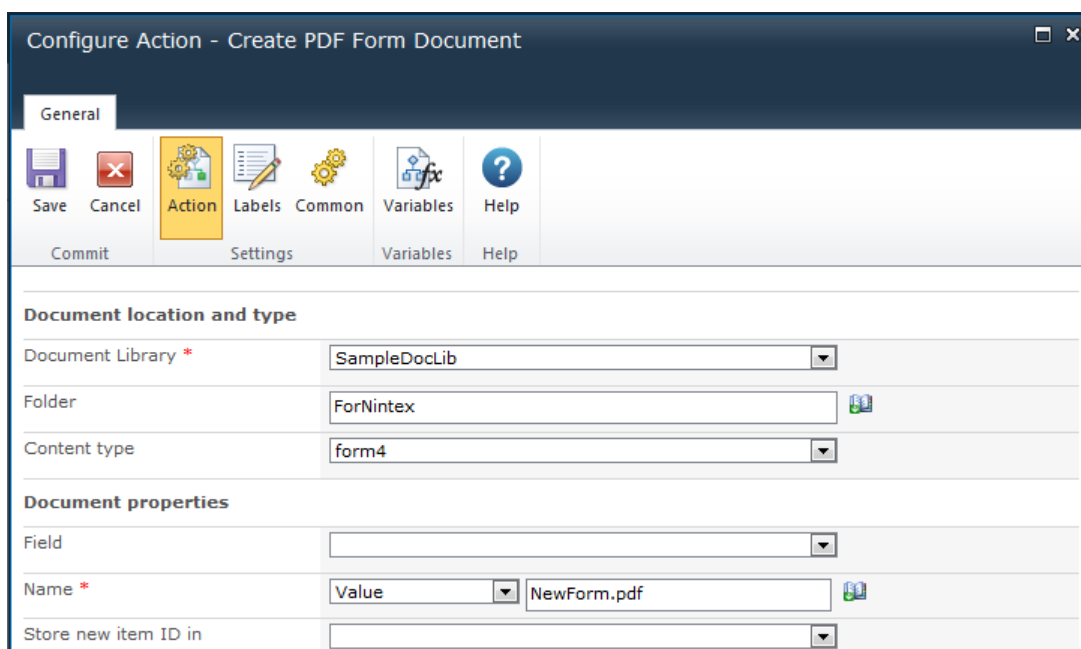
Since the action is missing some key information, it is highlighted with a yellow exclamation point.



Examples

Creating a new form using Create PDF Form Document

The newly opened window asks to specify Document location and type, as well as the properties. Choose the required **Document Library** and **Name** from the drop-down lists. After finishing click on **Variable** section.



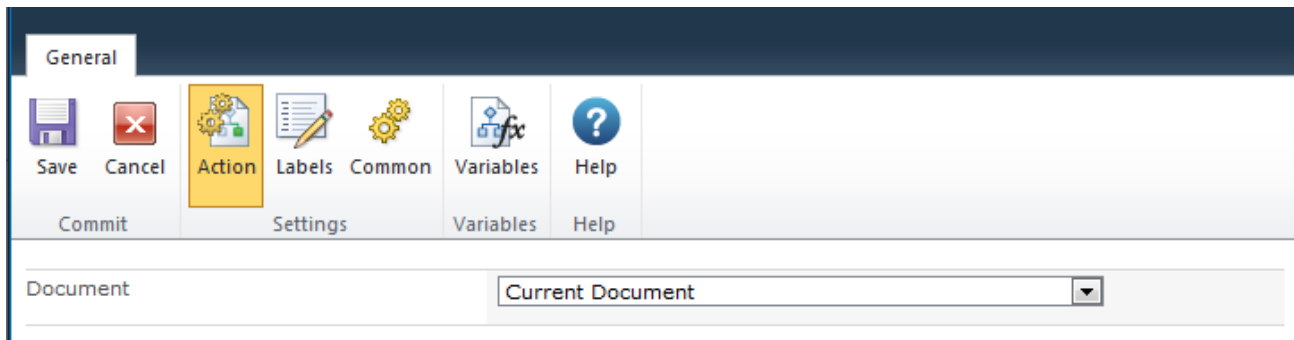
New PDF form named "NewForm.pdf" will be created in "SampleDocLib" library in "ForNintex" folder. Content type "form4" was used for this form.

**Created PDF document doesn't become a current document.*

Addressing to form

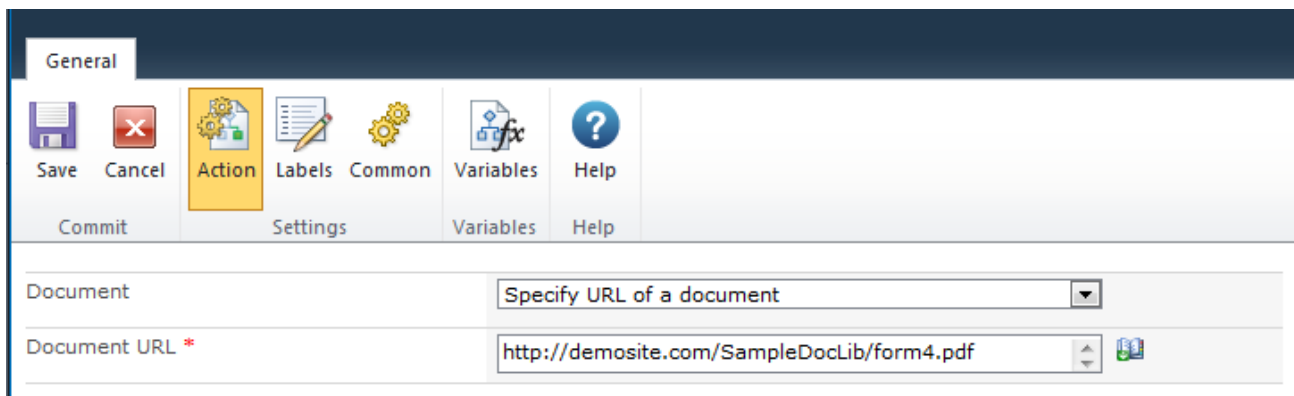
There are two ways of addressing to form:

- Choosing Current Document



In this example current document is a target document.

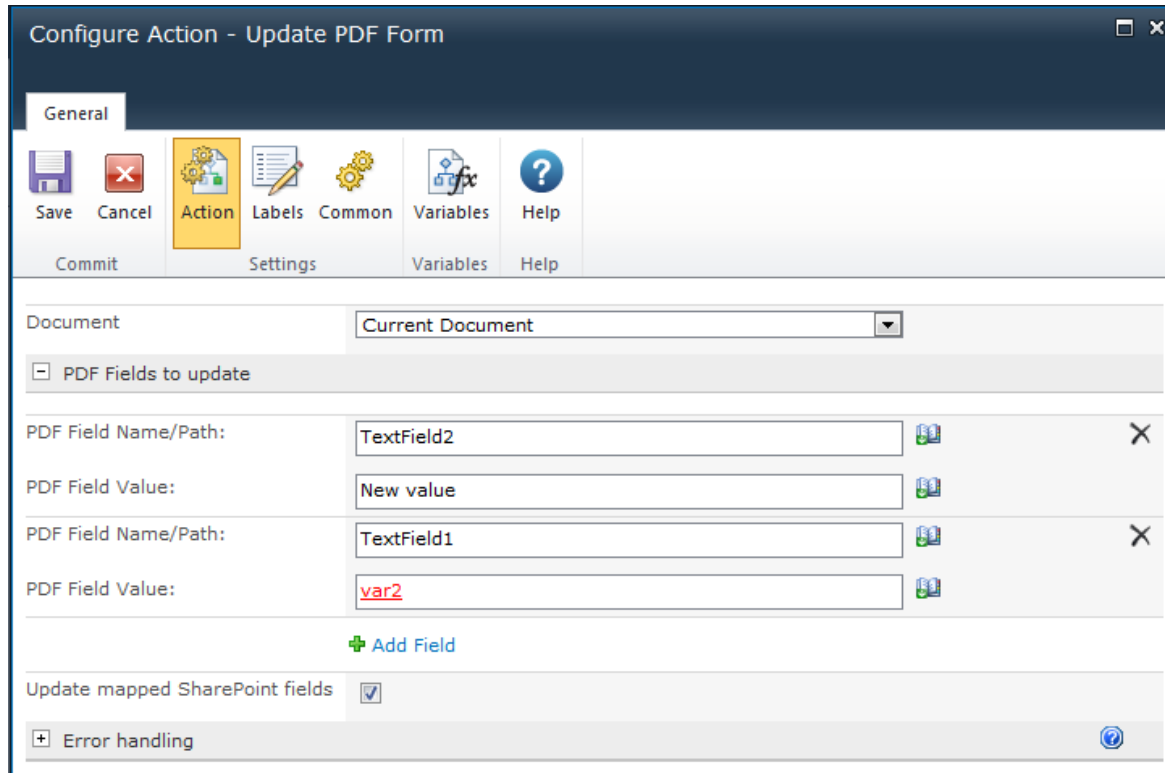
- Choosing specify URL of a document



In this example "form4" is a target document, which is located in "SampleDocLib" library.

Addressing to form's fields

Text Fields



Configure Action - Update PDF Form

General

Save Cancel Action Labels Common Variables Help

Commit Settings Variables Help

Document: Current Document

PDF Fields to update

PDF Field Name/Path: TextField2 PDF Field Value: New value

PDF Field Name/Path: TextField1 PDF Field Value: var2

+ Add Field

Update mapped SharePoint fields

+ Error handling

PDF Field Value "New value" will be placed into "TextField2", PDF Field Value of variable "var2" will be placed into "TextField1" of the current document.

Check boxes

CheckBox1 value is set to **“Yes”**. That means that check box is checked”.

**Only values “Yes” and “No” or “Yes/No” type variables can be used.*

Radio button groups

To address radio buttons, you need to set Radio button group’s name as Field Name, but radio button’s name — is a name of checked radio button from that group. In this example in “RadioButtonGroup1” will be checked “RadioButton1”.

Advanced read/update

Configure Action - Update PDF Form Advanced

General

Save Cancel Action Labels Common Variables Help

Commit Settings Variables Help

Document: Current Document

Form data XML * Insert Reference

```
<Root>
<TextField1>Advanced value</TextField1>
</Root>
```

Update mapped SharePoint fields

+ Error handling ?

Value "Advanced value" will be placed into "TextField1" of a current document.

Other information

A short demonstration video:

<http://www.pdfshareforms.com/collaborate-with-pdf-forms-within-nintex-workflow/>