



PDF SHARE FORMS

Online, Offline, OnDemand

PDF forms and SharePoint are better together

Moving multiple PDF forms from SharePoint 2010 to Sharepoint 2013

Contents

SharePoint 2010 details 2

SharePoint 2013 details 2

Moving files between SharePoint 2010 and 2013 3

 Moving template..... 3

 Moving PDF forms..... 5

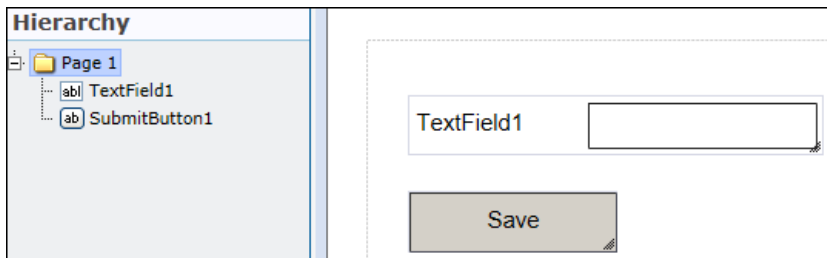
 Uploading PDF forms to SharePoint 2013 library 6

This guide will show how to move template form and multiple PDF forms which possess same content type from SharePoint 2010 to SharePoint 2013.

Note: make sure you are using latest version of PDF Share Forms for SharePoint 2013.

SharePoint 2010 details

In this example was used following PDF template (called PDFForm):



“TextField1” field is mapped to “TextField1” SharePoint column.

Target library (called PDFForms):

Type	Name	TextField1
	PDFForm_2 <small>NEW</small>	Hello world
	PDFForm_3 <small>NEW</small>	Some info
	PDFForm_4 <small>NEW</small>	New form
	PDFForm_5 <small>NEW</small>	Text field

[+ Add document](#)

As it can be seen this library has four instances of PDF forms – each form has data written into “TextField1”. These forms will be moved to SharePoint 2013.

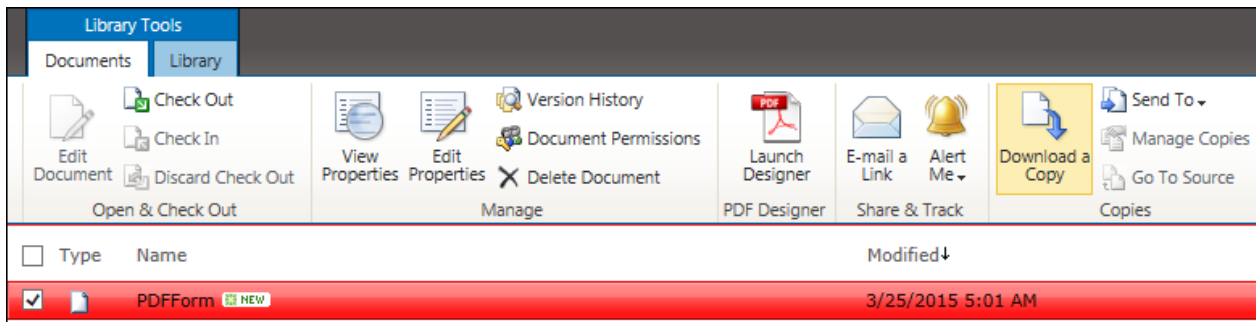
SharePoint 2013 details

It is required to create same library as it was in SharePoint 2010 (in this example “PDFForms”)

Moving files between SharePoint 2010 and 2013

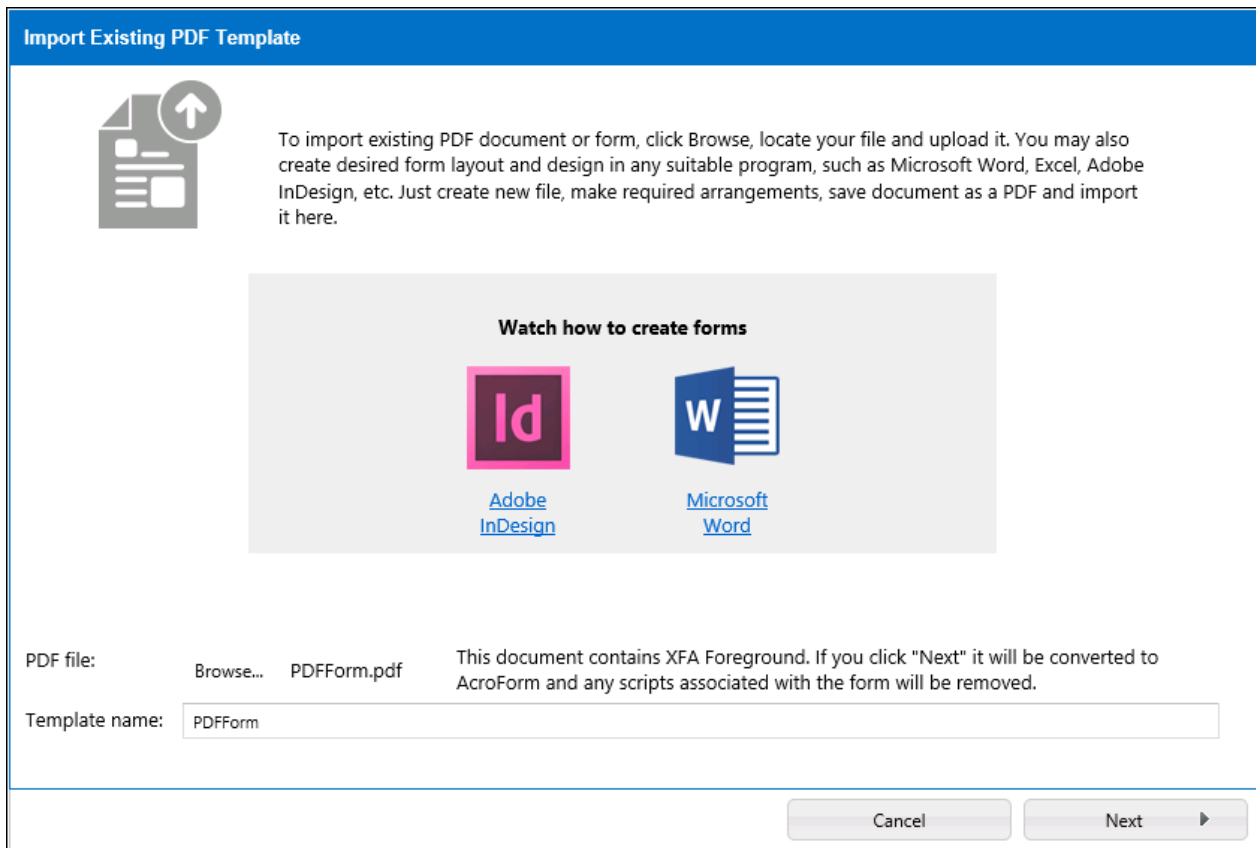
Moving template

1. Download template (here PDFForm) from “PDF Forms Templates” in SharePoint 2010 by clicking on “Download a Copy”:

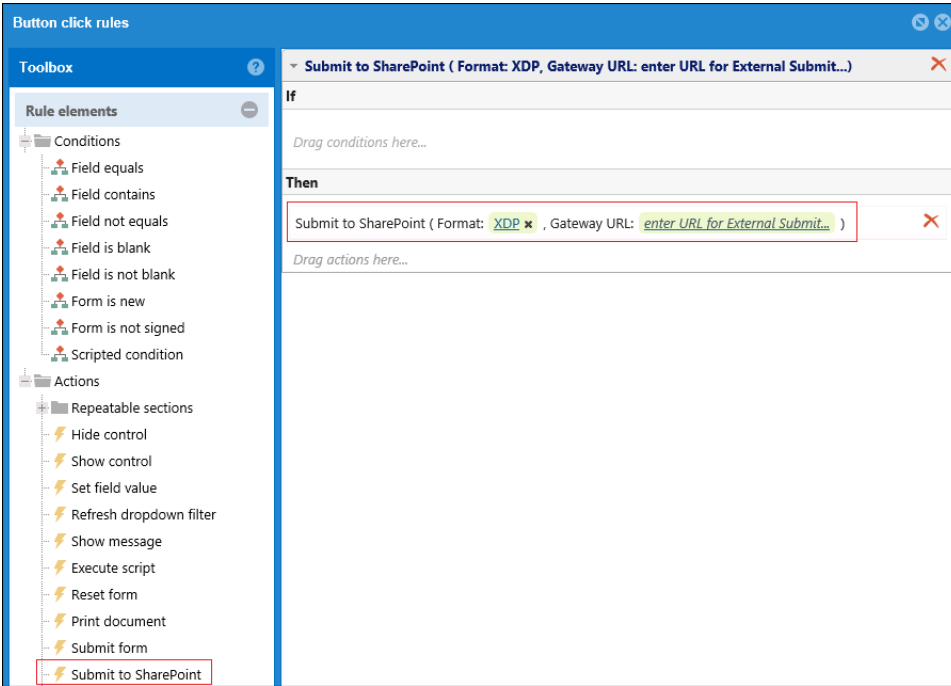


2. Import downloaded template to SharePoint 2013 “PDF Share Forms Templates”:

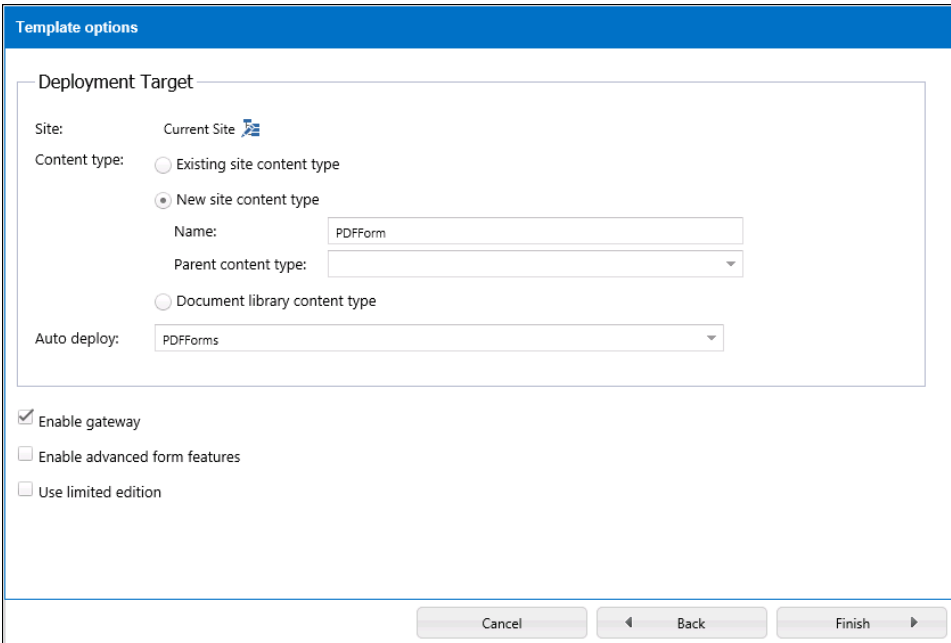
- A. Click on “Import Template”;
- B. Select your PDF template:



C. Delete old “Submit to SharePoint” action inside submit button and place new “Submit to SharePoint” action on the same place:



D. Deploy template to SharePoint library (PDFForms):



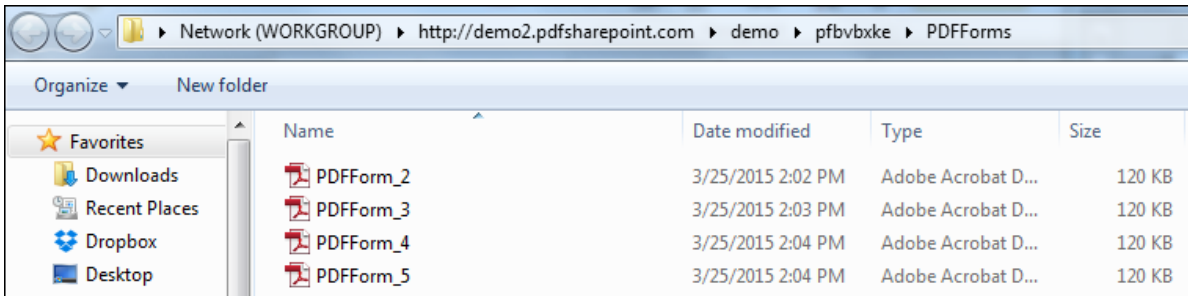
Moving PDF forms

1. Open PDFForms library in SharePoint 2010 using “Open with Explorer”:

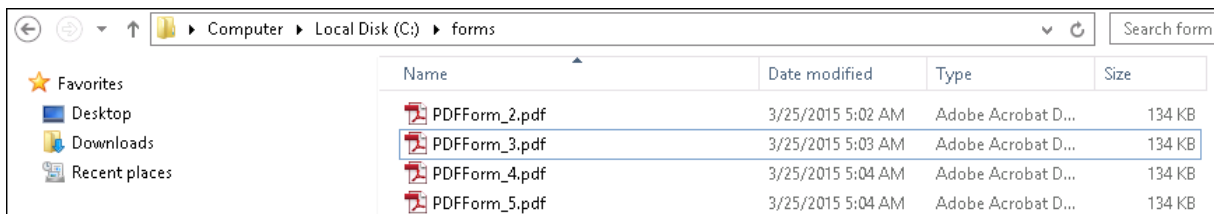


Note: this can be done only in Internet Explorer.

2. This will open your SharePoint library in Explorer as folder:



3. Copy these PDF forms to your SharePoint 2013 server machine (for example to C:\forms):





Uploading PDF forms to SharePoint 2013 library

In order to upload all PDF forms at once and assign proper content type (from deployed PDF template) will be used custom PowerShell script

1. Open Notepad and paste there following code:

```
function UploadPDF
{
    #Parameters to define Part
    $url = "http://sp2013srv"
    $listName = "PDFForms"
    $ctName = "PDFForm"
    $filesPath = "c:\forms"

    #Execution Part
    $web = Get-SPWeb $url
    $files = Get-ChildItem -Path $filesPath -Force -Recurse
    $list = $web.Lists.TryGetList($listName)
    $newct = $list.ContentTypes[$ctName]
    $newctid = $newct.ID
    foreach ($file in $files)
    {
        $stream = $file.OpenRead()
        $fname = $file.Name
        Write-Host $file.Name
        $uploadedFile= $list.RootFolder.Files.Add($file.Name, $stream, $true)
        $item = $uploadedFile.Item
        $item["ContentTypeId"] = $newctid
        $item.Update()
        $item | Upgrade-PDFShareFormsDocument
        Write-Host "Updated"
    }
    $web.Dispose()
    Write-Host "Done"
}
```

Section “Parameters to define Part” should be filled with information specific to you SharePoint site, library name, content type name and path where you placed PDF forms:

-\$url is your site url with site collection;

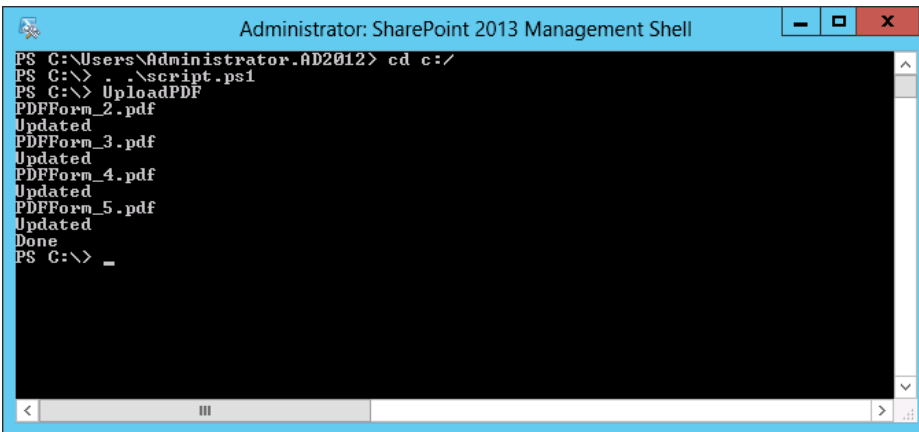
-\$listName is the name of your SharePoint list (here “PDFForms”);

-\$ctName is the name of content type – by default it is the same as template name (here “PDFForm”). Also it is possible to check content type name in library settings where template is deployed:

Content Types	
This document library is configured to allow multiple content types. Use content types to specify	
Content Type	Visible on New Button
Document	✓
PDFForm	✓

-\$filePath is location on your server where you copied PDF forms (here c:\forms)

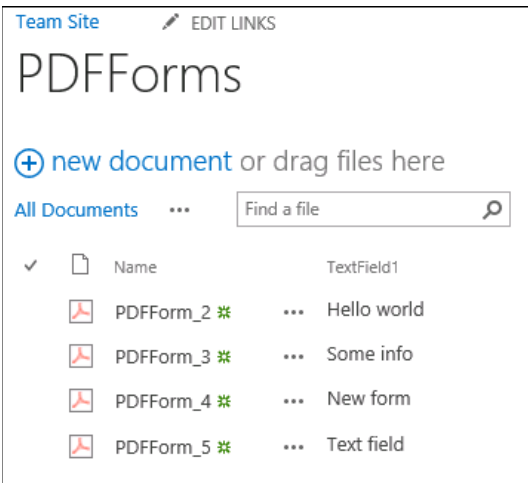
2. Save script as “.ps1” file (for example “script.ps1”)
3. Run SharePoint Management Shell and execute following commands:
 - Switch to location where you saved script file: cd c:/
 - Run script file: . .\script.ps1
 - Run function inside script file: UploadPDF



```

Administrator: SharePoint 2013 Management Shell
PS C:\Users\Administrator.AD2012> cd c:/
PS C:\> . .\script.ps1
PS C:\> UploadPDF
PDFForm_2.pdf
Updated
PDFForm_3.pdf
Updated
PDFForm_4.pdf
Updated
PDFForm_5.pdf
Updated
Done
PS C:\> _
  
```

4. Check library in SharePoint 2013:



All forms from server folder were moved to “PDFForms” library and assigned to the right content type.